

**LEGEND**

- CITY / RVC BOUNDARY
- EX LEGAL LINE
- PROP ASCENSION DEVELOPMENT
- PROP ROADWAY

0 200 400 m  
1:10000

PROJECT  
**12 MILE COULEE ROAD LIMITED SCOPE FUNCTIONAL PLANNING STUDY**

FIGURE TITLE  
**RECOMMENDED PLAN OVERALL VIEW**

FILE No. 28002_Plan_CFI_overall.dwg	SCALE 1:10000	FIGURE No. <b>2.01</b>
--	------------------	---------------------------

ISC. SHEET SIZE ANSI B 20 mm

FILE G:\PROJECTS\28000\28002\CROWCHILD\_12MIL\_INTERSECTION\2\_CADD\20\_DRAFTING\203\_SKETCHES\28002\_PLAN\_CFI\_OVERALL.DWG | DATE: June 1, 2023 12:11:51 AM



FILE: G:\PROJECTS\9800028002\_CROWCHILD\_12MC\_INTERSECTION\02\_CADD\20\_DRAFTING\203\_SKETCHES\28002\_Plan\_CFI\_West.dwg DATE: June 1, 2023 12:13:04 AM

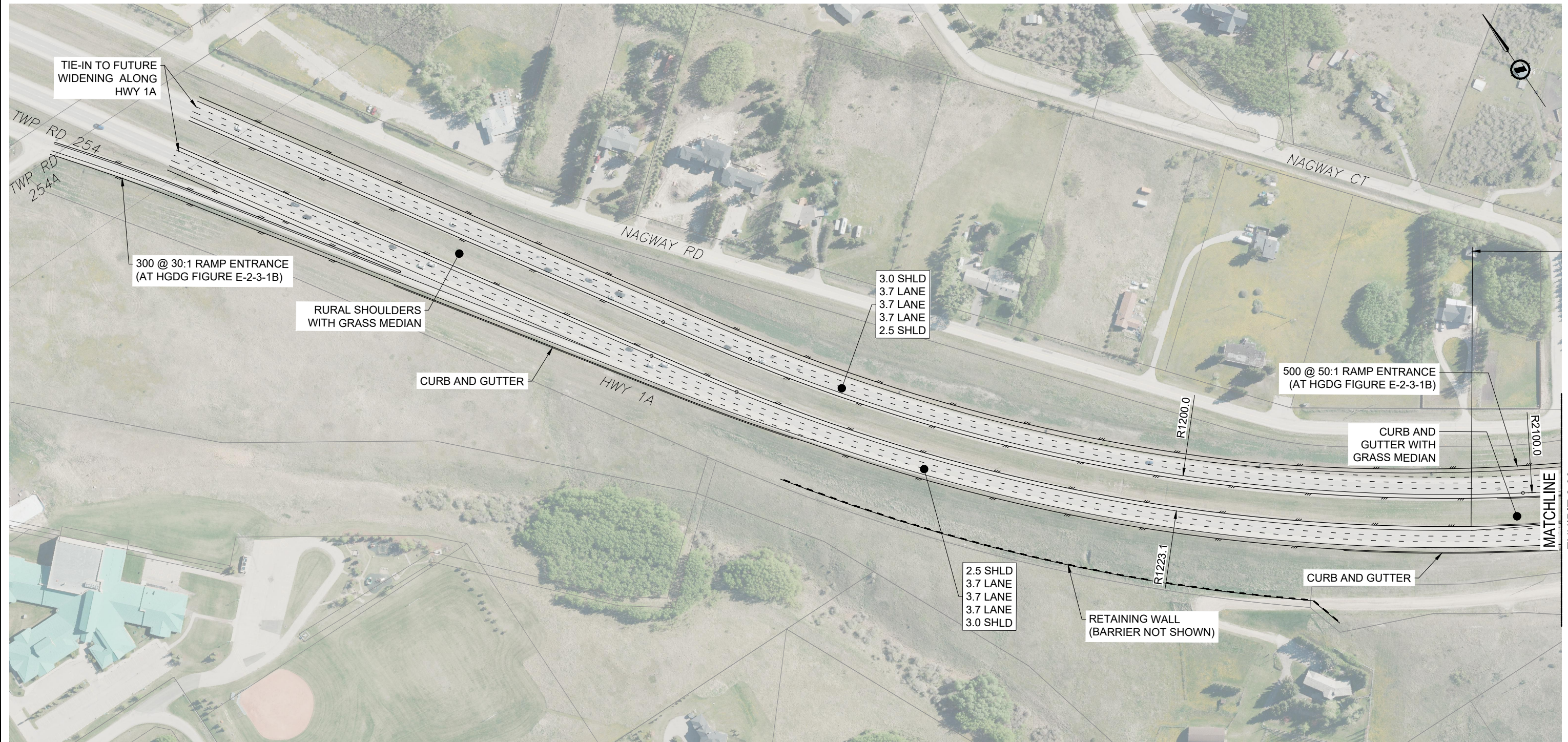


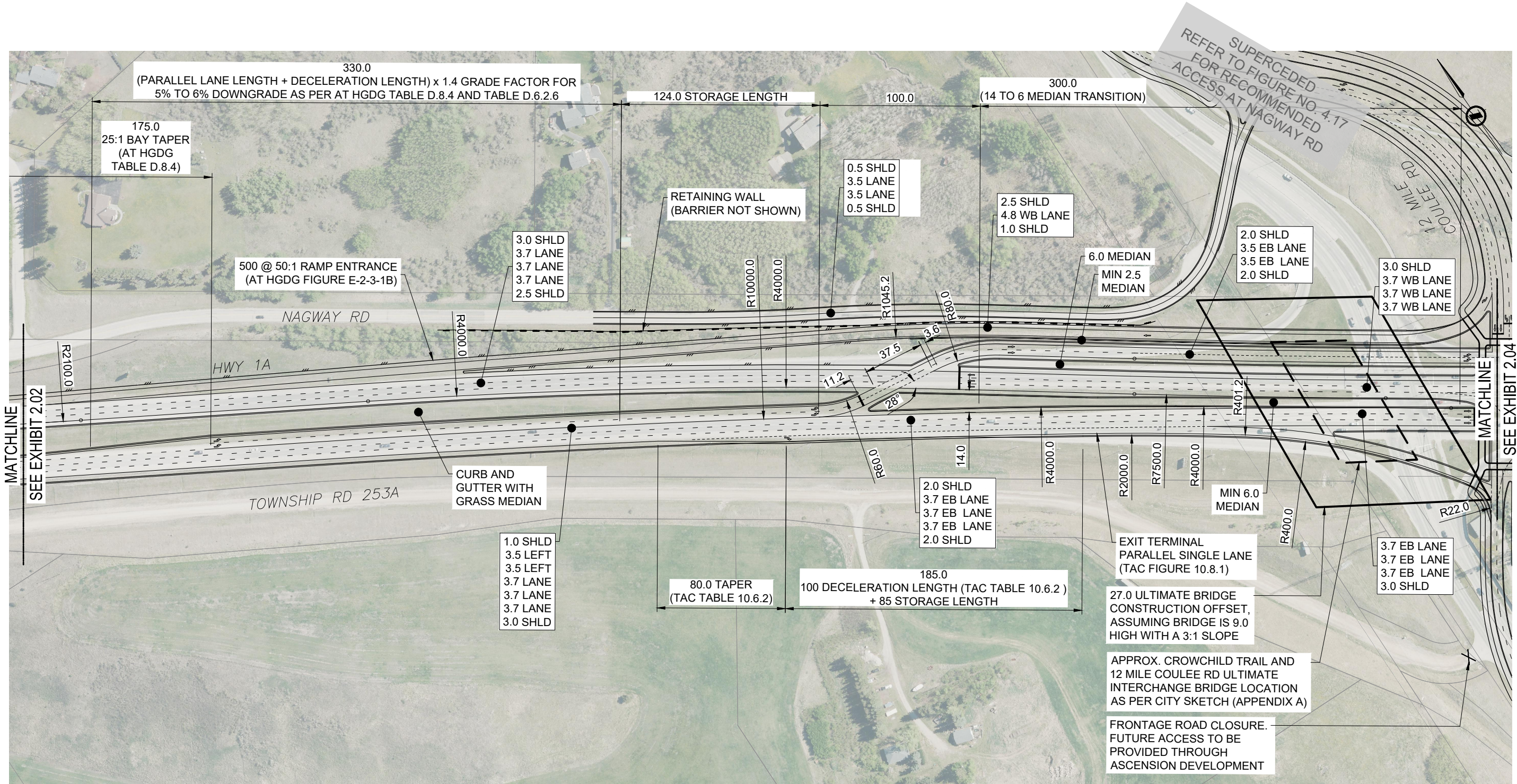


EXHIBIT 2.03



 	
PROJECT <b>12 MILE COULEE ROAD LIMITED SCOPE FUNCTIONAL PLANNING STUDY</b>	
FIGURE TITLE <b>RECOMMENDED PLAN CROWCHILD TRAIL TIE-IN AT WEST LIMITS</b>	
FILE No: 28002_Plan_CFI_West.dwg	SCALE 1:2500
FIGURE No. <b>2.02</b>	
<small>ISC: SHEET SIZE ANSI B 20 mm</small>	







MATCHLINE  
SEE EXHIBIT 2.02

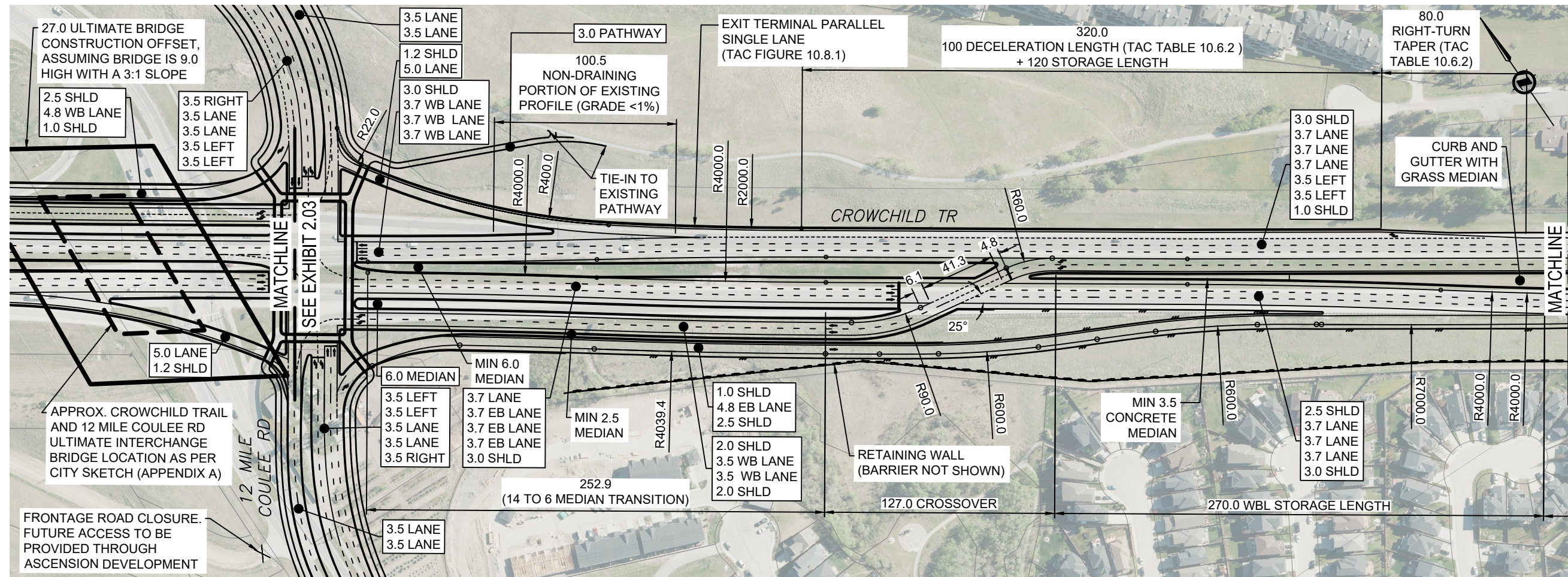
MATCHLINE  
SEE EXHIBIT 2.04



 	
<b>PROJECT</b> 12 MILE COULEE ROAD LIMITED SCOPE FUNCTIONAL PLANNING STUDY	
<b>FIGURE TITLE</b> RECOMMENDED PLAN CROWCHILD TRAIL WEST DLT TO 12 MILE COULEE ROAD	
FILE No: 28002_Plan_CFI_West.dwg	SCALE 1:2500
FIGURE No. <b>2.03</b>	

FILE: G:\PROJECTS\28002\28002\_CROWCHILD\_12M\_INTERSECTION\12M\_INTERSECTION\02\_CADD\20\_DRAFTING\203\_SKETCHES\28002\_Plan\_CFI\_West.dwg DATE: June 1, 2023 12:13:36 AM





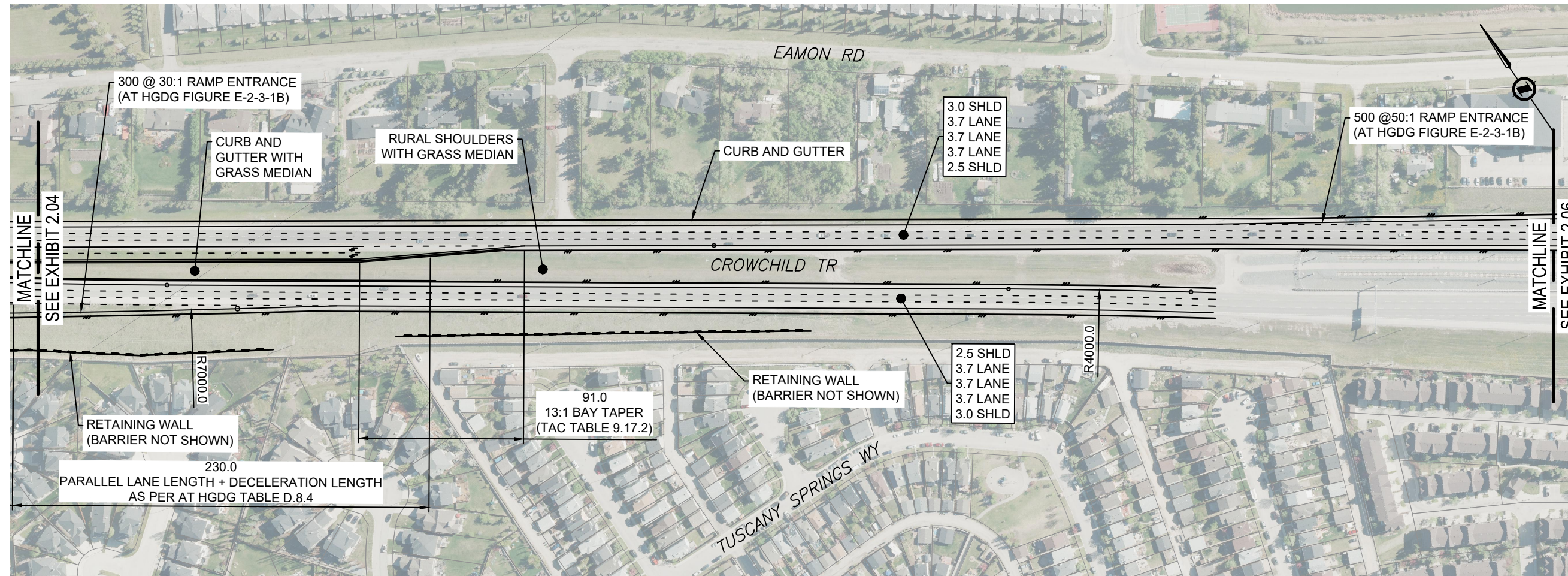
PROJECT  
**12 MILE COULEE ROAD LIMITED SCOPE FUNCTIONAL PLANNING STUDY**

FIGURE TITLE  
**RECOMMENDED PLAN  
CROWCHILD TRAIL  
12 MILE COULEE ROAD TO EAST DLT**

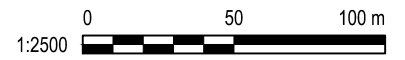
FILE No. 28002_Plan_CFI_East.dwg	SCALE 1:2000	FIGURE No. <b>2.04</b>
-------------------------------------	-----------------	---------------------------



ISC: SHEET SIZE ANSI B 20 mm



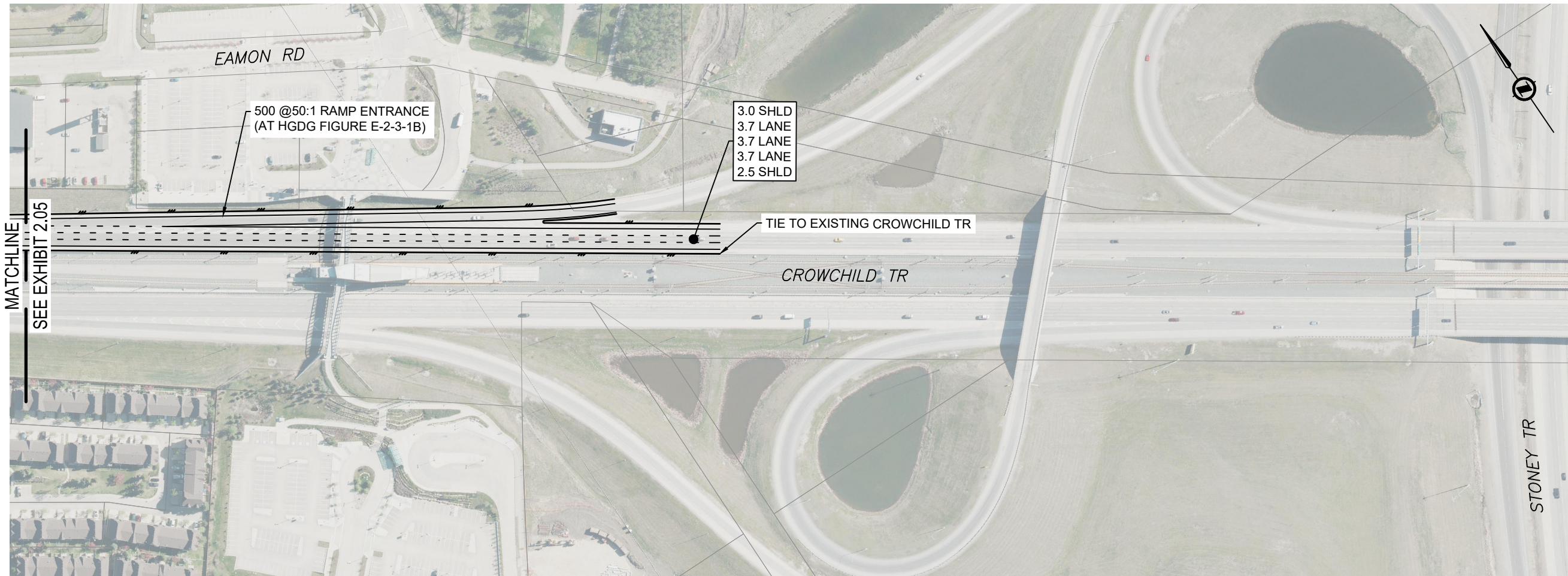


FILE: G:\PROJECTS\98000\28002\CROWCHILD\_12MC\_INTERSECTION\12MC\_INTERSECTION\02\_CADD\20\_DRAFTING\203\_SKETCHES\28002\_PLAN\_CFI\_EAST.DWG | DATE: June 1, 2023 12:15:27 AM



 	
<b>PROJECT</b> 12 MILE COULEE ROAD LIMITED SCOPE FUNCTIONAL PLANNING STUDY	
<b>FIGURE TITLE</b> RECOMMENDED PLAN CROWCHILD TRAIL EAST DLT TO TUSCANY LRT	
FILE No: 28002_Plan_CFI_East.dwg	SCALE: 1:2500
FIGURE No: <b>2.05</b>	
<small>ISC. SHEET SIZE ANSI B 20 mm</small>	





MATCHLINE  
SEE EXHIBIT 2.05

EAMON RD

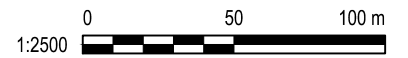
500 @50:1 RAMP ENTRANCE  
(AT HGDG FIGURE E-2-3-1B)

3.0 SHLD  
3.7 LANE  
3.7 LANE  
2.5 SHLD

TIE TO EXISTING CROWCHILD TR

CROWCHILD TR

STONEY TR



PROJECT  
**12 MILE COULEE ROAD LIMITED SCOPE  
FUNCTIONAL PLANNING STUDY**

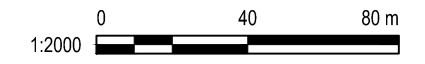
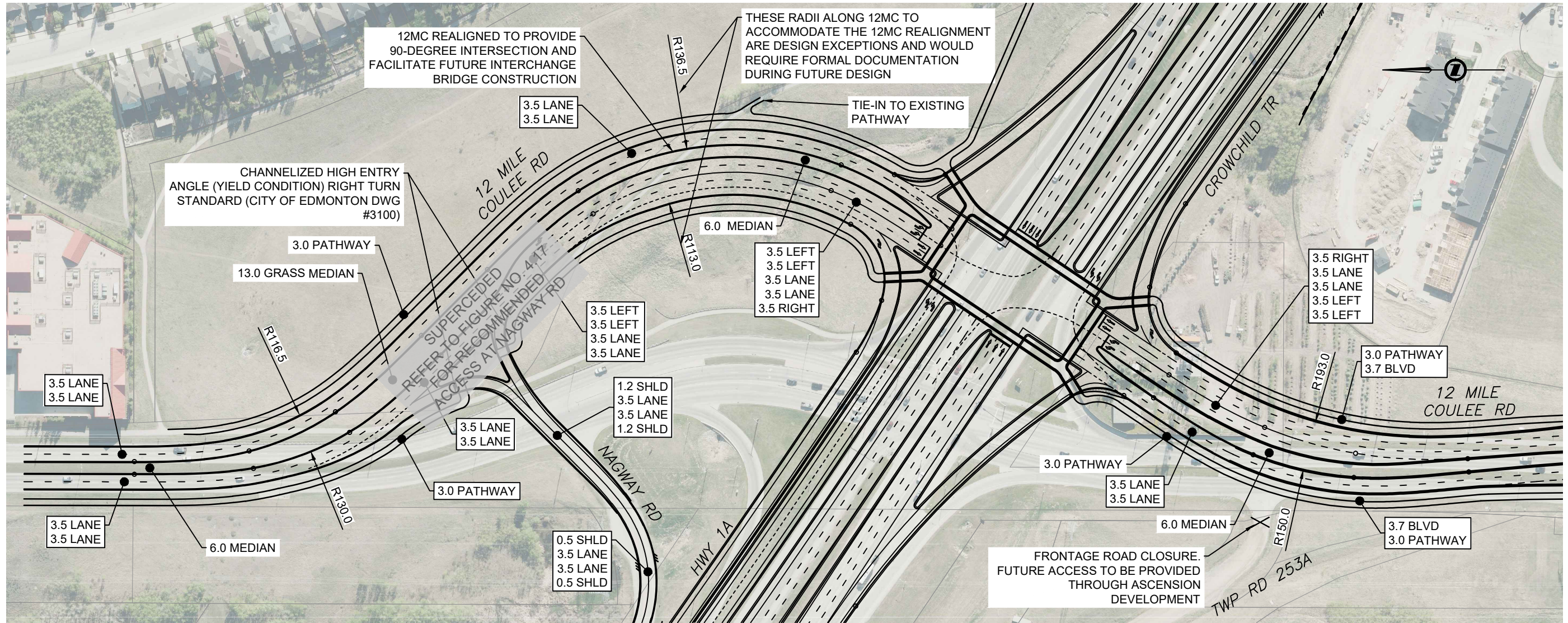
FIGURE TITLE  
**RECOMMENDED PLAN  
CROWCHILD TRAIL  
TIE-IN AT EAST LIMITS**



FILE No. 28002_Plan_CFI_East.dwg	SCALE 1:2500	FIGURE No. <b>2.06</b>
-------------------------------------	-----------------	---------------------------

ISC: SHEET SIZE ANSI B 20 mm



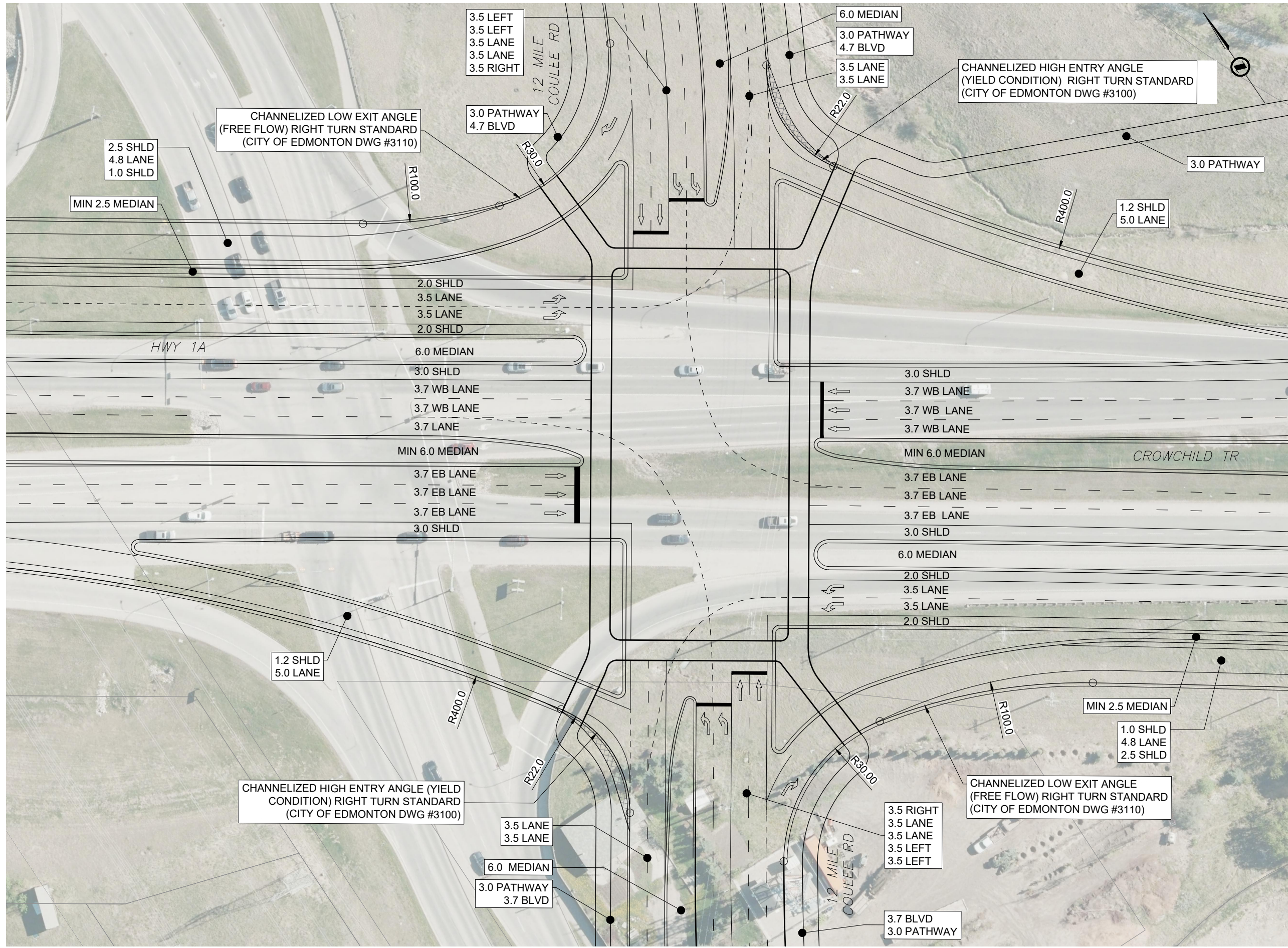
FILE: G:\PROJECTS\98000\28002\CROWCHILD\_12MC\_INTERSECTION\2023\SKETCHES\28002\_PLAN\_CFI\_12MC.dwg | DATE: June 1, 2023 8:30:05 AM





 	
PROJECT	
12 MILE COULEE ROAD LIMITED SCOPE FUNCTIONAL PLANNING STUDY	
FIGURE TITLE	
RECOMMENDED PLAN 12 MILE COULEE ROAD NORTH OF ROUNDABOUT	
FILE No.	SCALE
28002_Plan_CFI_12MC.dwg	1:2000
FIGURE No.	
2.07	
SHEET SIZE ANSI B	



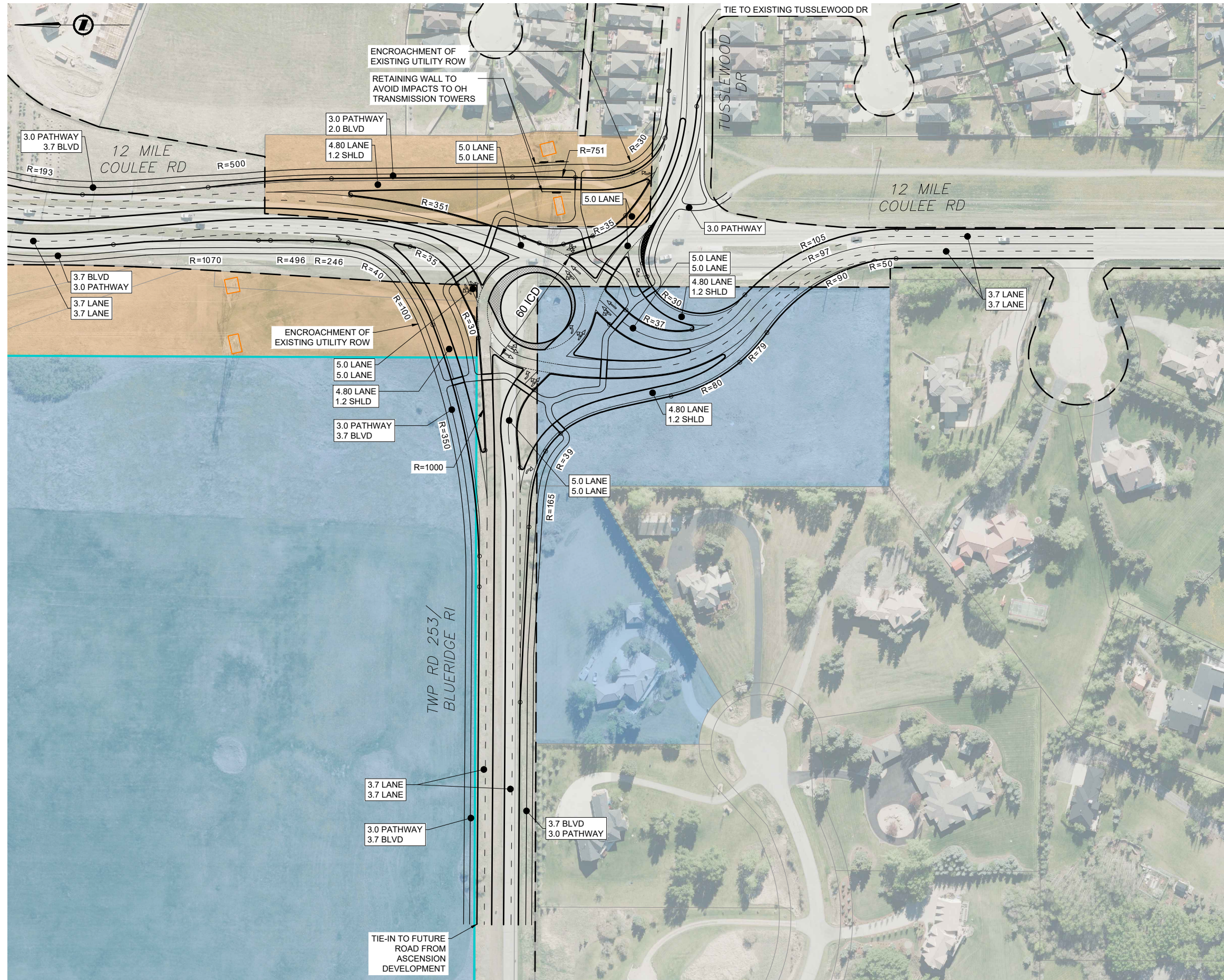
FILE: G:\PROJECTS\98000\28002\CROWCHILD\_12MILE\_INTERSECTION\02\_CADD\20\_DRAFTING\203\_SKETCHES\28002\_PLAN\_INTERSECTION.DWG | DATE: June 1, 2023 12:18:42 AM









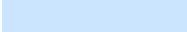


 	
<b>PROJECT</b> 12 MILE COULEE ROAD LIMITED SCOPE FUNCTIONAL PLANNING STUDY	
<b>FIGURE TITLE</b> RECOMMENDED PLAN 12 MILE COULEE ROAD INTERSECTION LAYOUT	
FILE No: 28002_Plan_Intersection.dwg	SCALE 1:750
FIGURE No: <b>2.08</b>	
<small>ISC SHEET SIZE ANSI B 20 mm</small>	



FILE: G:\PROJECTS\98000\28002\CROWCHILD\_12MC\_INTERSECTION\02\_CADD\20\_DRAFTING\203\_SKETCHES\28002\_PLAN\_RDBT\_4.DWG | DATE: June 1, 2023 12:21:00 AM



### LEGEND

-  CITY / RVC BOUNDARY
-  EX LEGAL LINE
-  PROP ASCENSION DEVELOPMENT
-  PROP ROADWAY
-  EX ROAD ROW (PROJECT RELATED ROADS ONLY)
-  EX CITY-OWNED PROPERTY
-  EX HLM-OWNED PROPERTY
-  EX UTILITY ROW
-  EX OH TRANSMISSION TOWERS



PROJECT  
**12 MILE COULEE ROAD LIMITED SCOPE  
 FUNCTIONAL PLANNING STUDY**

FIGURE TITLE  
**RECOMMENDED PLAN  
 12 MILE COULEE ROAD  
 ROUNDABOUT**

FILE No. 28002_Plan_RDBT_4.dwg	SCALE 1:2500	FIGURE No. <b>2.09</b>
-----------------------------------	-----------------	---------------------------

ISC: SHEET SIZE ANSI B 20 mm



